

STA
COU
W
HER

STA
COU
I
AN
CAM
NOF
DES
NOV
MEP
WIT

STA
COL
I
OFF
DON
THE
AND
THE
WIT

File
→

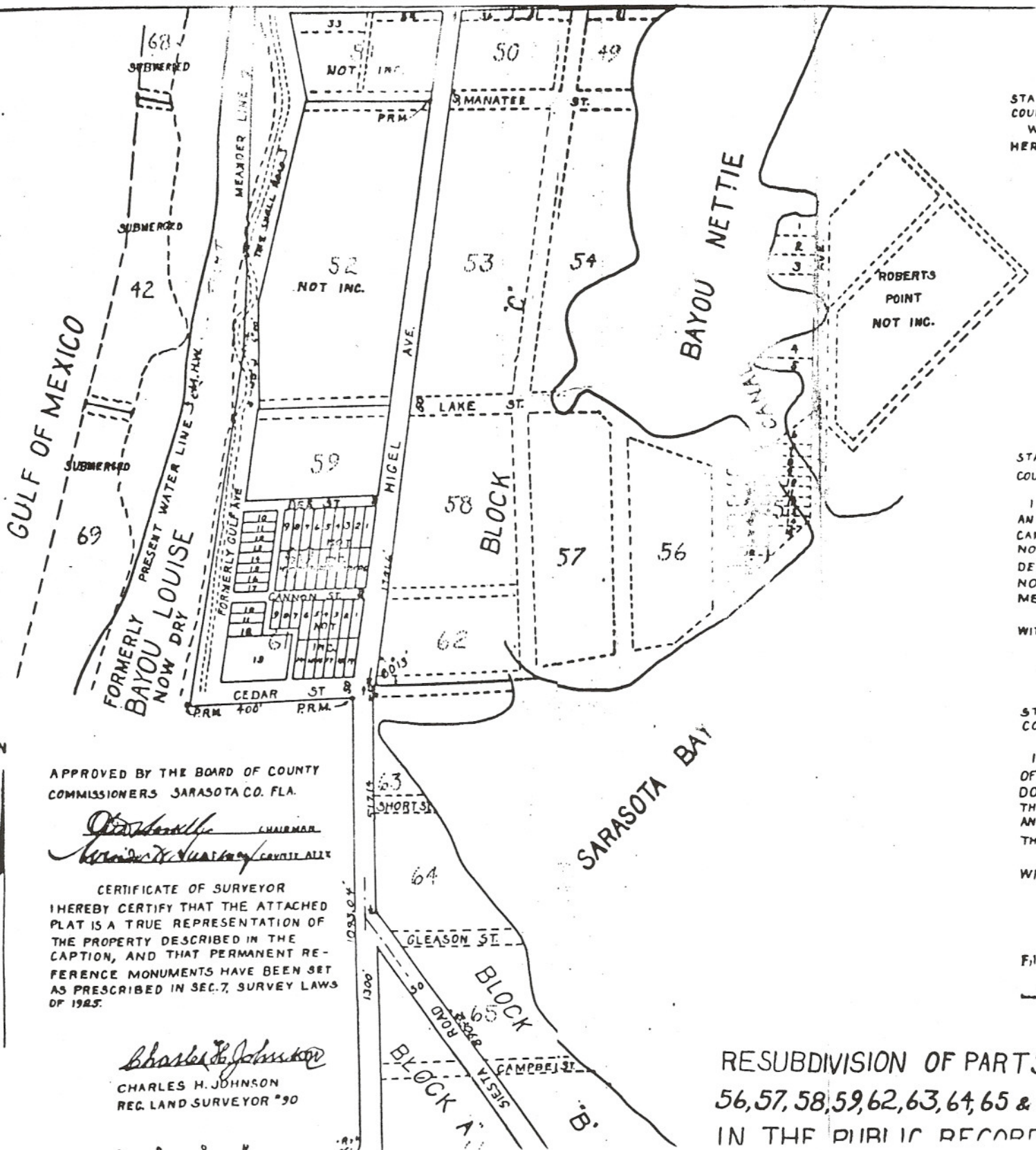
APPROVED BY THE BOARD OF COUNTY COMMISSIONERS SARASOTA CO. FLA.

[Signature] CHAIRMAN
[Signature] COUNTY CLERK

CERTIFICATE OF SURVEYOR
 I HEREBY CERTIFY THAT THE ATTACHED PLAT IS A TRUE REPRESENTATION OF THE PROPERTY DESCRIBED IN THE CAPTION, AND THAT PERMANENT REFERENCE MONUMENTS HAVE BEEN SET AS PRESCRIBED IN SEC. 7, SURVEY LAWS OF 1985.

[Signature]
 CHARLES H. JOHNSON
 REG. LAND SURVEYOR #90

RESUBDIVISION OF PARTS
 56, 57, 58, 59, 62, 63, 64, 65 & 6
 IN THE PUBLIC RECORD



STA
COU
W
HER

STA
COU
I
AN
CAM
NOF
DES
NOV
MEP
WIT

STA
COL
I
OFF
DON
THE
AND
THE
WIT

File
→

APPROVED BY THE BOARD OF COUNTY COMMISSIONERS SARASOTA CO. FLA.

[Signature] CHAIRMAN
[Signature] COUNTY CLERK

CERTIFICATE OF SURVEYOR
 I HEREBY CERTIFY THAT THE ATTACHED PLAT IS A TRUE REPRESENTATION OF THE PROPERTY DESCRIBED IN THE CAPTION, AND THAT PERMANENT REFERENCE MONUMENTS HAVE BEEN SET AS PRESCRIBED IN SEC. 7, SURVEY LAWS OF 1985.

[Signature]
 CHARLES H. JOHNSON
 REG. LAND SURVEYOR #90

RESUBDIVISION OF PARTS
 56, 57, 58, 59, 62, 63, 64, 65 & 6
 IN THE PUBLIC RECORD

SARASOTA BAY

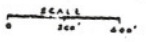


PLAT BK. A
PAGE 38

REVISED
PLAT
OF
SIESTA
SUBDIVISION

Description All that part of Little Sarasota Key
lying in Sec 26 R. 17E T. 36S and
containing 23 1/2 acres or Sec 1, 2, 17E T. 37S

Surveyed and plotted by
The Lott & Thomas Engineering Co
Sarasota Fla.



We hereby consent and agree to the above subdivision
Sylvia B. Myer
Mrs. M. S. Howell
Harry L. Myer
Frank Roberts
Barth Edmondson
Sister L. M. Hazel
represented by the undersigned
J. Belmont Edmondson

Note:
All Riparian Rights being reserved by present owners unless specifically

Manatee County Plat Book 1
Page 243
Filed July 31 1912.

SEE PLAT BOOK 5 - P. 243 & 244

COCOANUT BAYOU

132410

SUBDIVISION
 ES Boyd, Owner & Developer
 Siesta Key, Sarasota Fla.



259, 265,
 271

Scale 1"=100'
 Sarasota County
 Florida
 May 20 1949

Iron pipe on all corners
 unless otherwise noted.

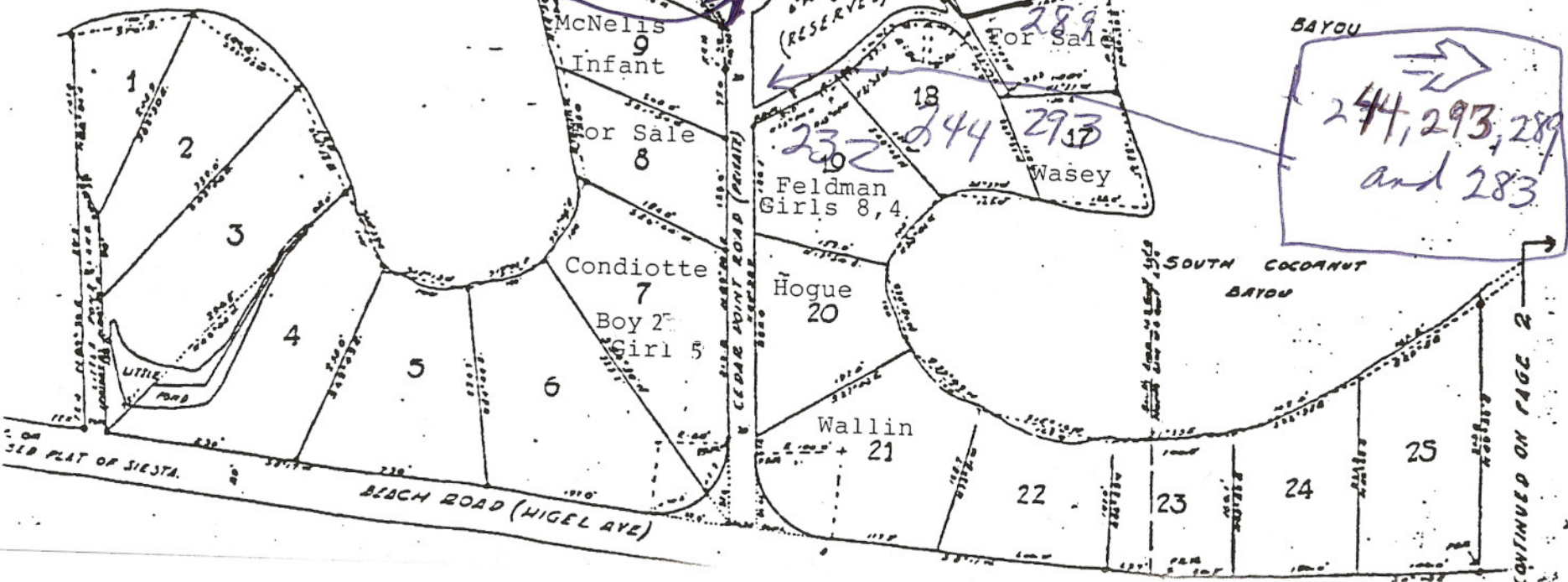
Louis Cobia, registered
 Surveyor License 705

CHANNEL TO LITTLE SARASOTA BAY
 CHANNEL TO LITTLE SARASOTA BAY

NORTH COCOANUT BAYOU

SOUTH
 COCOANUT
 BAYOU

244, 293, 289
 and 283



CONTINUED ON PAGE 2

